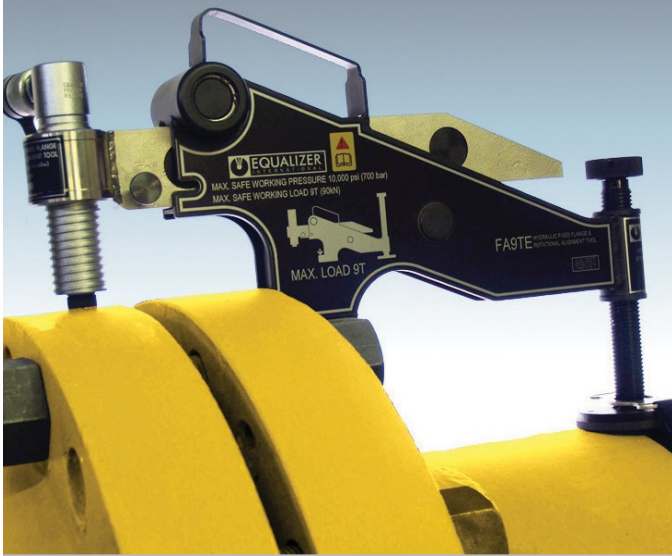




"innovacion en su forma mas funcional"

HOJA DE DATOS DEL PRODUCTO



FA9TE

BRIDA FIJA HIDRAULICA Y
HERRAMIENTA DE
ALINEACIÓN ROTACIONAL

FUERZA DE ALINEACIÓN:
10,000 psi (700 bar) = 9 T (90 kN)

PESO DE LA HERRAMIENTA =14.5 kg

(32 lbs)

COMPONENTE DEL KIT

- 1 x FA9TE Herramienta
- 1 x 10,000 psi (700 bar) Manguera Hidraulica, 2m (78")
- 1 x 10,000 psi (700 bar) Cilindro Hidráulico
- 1 x 10,000 psi (700 bar) HP350S Bomba manual sellada con manometro
- 1 x Correa de trinquete
- 1 x Manual de instrucciones
- 1 x Estuche

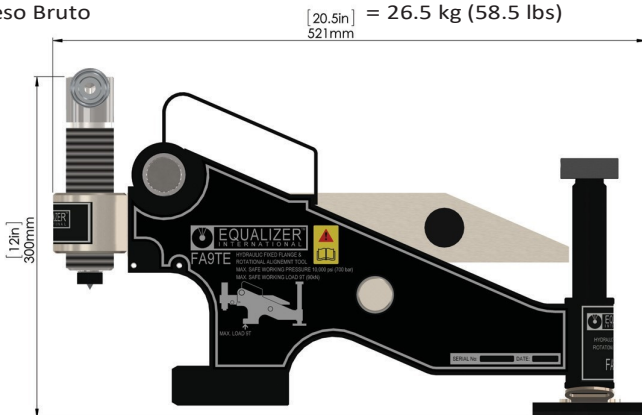
Codigo de producto: FA9TESTD



PESOS Y DIMENSIONES

Peso de la herramienta = 14.5 kg (32 lbs)
 Peso del estuche = 6.5 kg (14.3 lbs)
 Peso Bruto [20.5in] = 26.5 kg (58.5 lbs)
521mm

Dimensiones del estuche:
920 x 520 x 210mm (36.2" x 20.5" x 8.3")



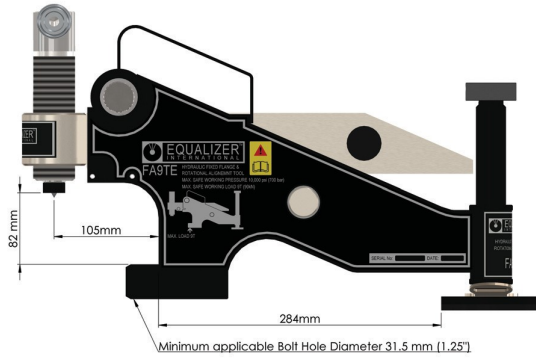
FA9TE

BRIDA FIJA HIDRÁULICA Y
HERRAMIENTA DE ALINEACION
ROTACIONAL

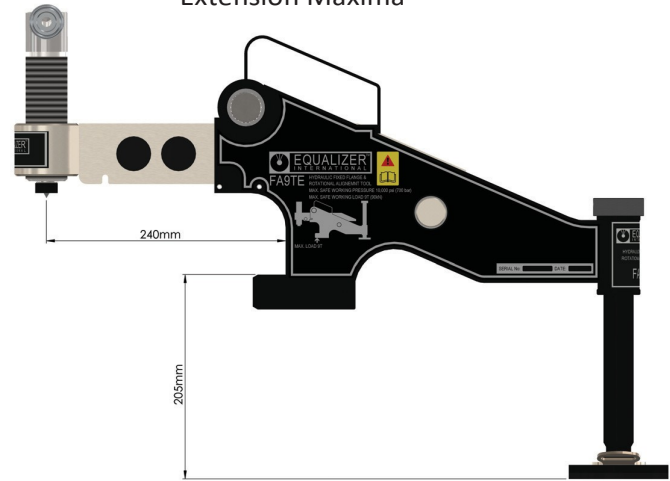


"Innovación en su forma más funcional"

Extensión Mínima



Extensión Máxima



RANGO DE APLICACIÓN

ASME Weld neck						
Class	150	300	400	600	900	2500
Range	32" - 48"	28" - 48"	26" - 48"	22" - 48"	16" - 30"	10" - 12"

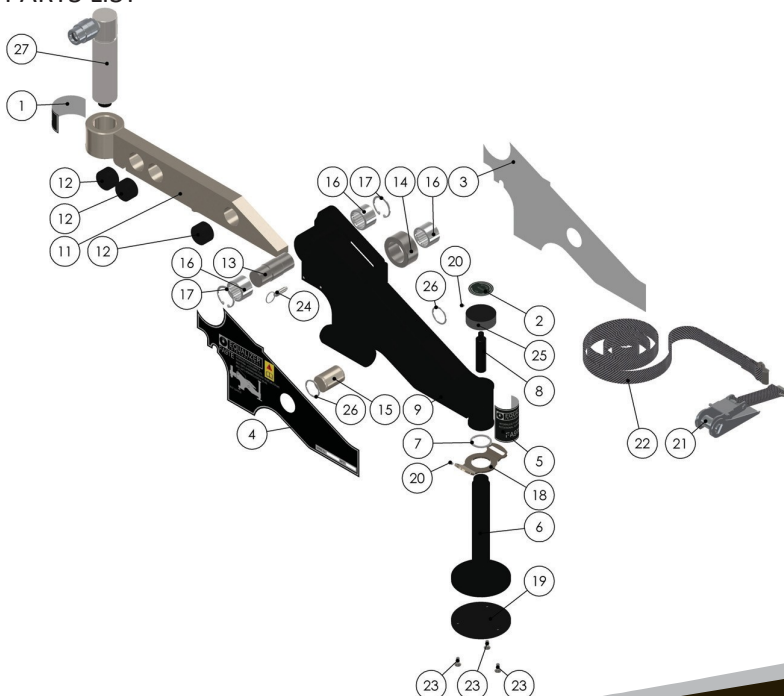
DIN Weld neck	
Class	PN100 PN160
Range	10" - 14" 8" - 12"

SPO compact Weld neck							
Class	300	600	900	1500	2500	5000	7500
Range	34" - 48"	26" - 48"	22" - 48"	14" - 44"	12" - 24"	12" - 24"	10" - 22"

BS10 Weld neck							
Class	D	E	F	J	K	R	S
Range	54" - 120"	42" - 48"	39" - 48"	17" - 24"	13" - 20"	12" - 20"	8" - 16"

API 6B&6BX Weld Neck				
Class	2000	3000	5000	10000
Range	11"	5 1/8" - 11"	4 1/16" - 11"	7 1/16" - 16 1/4"

PARTS LIST



ITEM	PART No.	DESCRIPTION	QUANTITY
1	070233-01	- LOGO FOR WING	01
2	070273-01	- DROP LEG KNOB	01
3	070276-01	- BODY PLATE STICKER LEFT	01
4	070277-01	- BODY PLATE STICKER RIGHT	01
5	070278-01	- LOGO FOR BOSS	01
6	220600-01	- LEG SCREW	01
7	220602-01	- SPIROL CLIP	01
8	220700-01	- LEG SCREW EXTENSION	01
9	230100-01	- MAIN BODY	01
10	230112-01	- SPRING PIN	02
11	230200-01	- WING ARM	01
12	230202-01	- PLASTIC INSERT	03
13	230300-01	- FRONT ROLLER PIN	01
14	230400-01	- REAR ROLLER	01
15	230500-01	- REAR ROLLER PIN	01
16	230600-01	- NEEDLE BEARING	03
17	230700-01	- CIRCLIP	02
18	230802-01	- BUCKLE	01
19	230803-01	- ROUND BASE PAD	01
20	300401-01	- SCKT SET SCREW	02
21	400270-01	- RATCHET	01
22	400280-01	- RATCHET STRAP	01
23	400901-01	- CTRS SCREW	03
24	632001-01	- SPRING PLUNGER	01
25	713001-01	- RELEASE KNOB	01
26	901601-01	- SPIROL CLIP	02
27	903101-01	- HYDRAULIC CYLINDER	01